

## **Cottage**

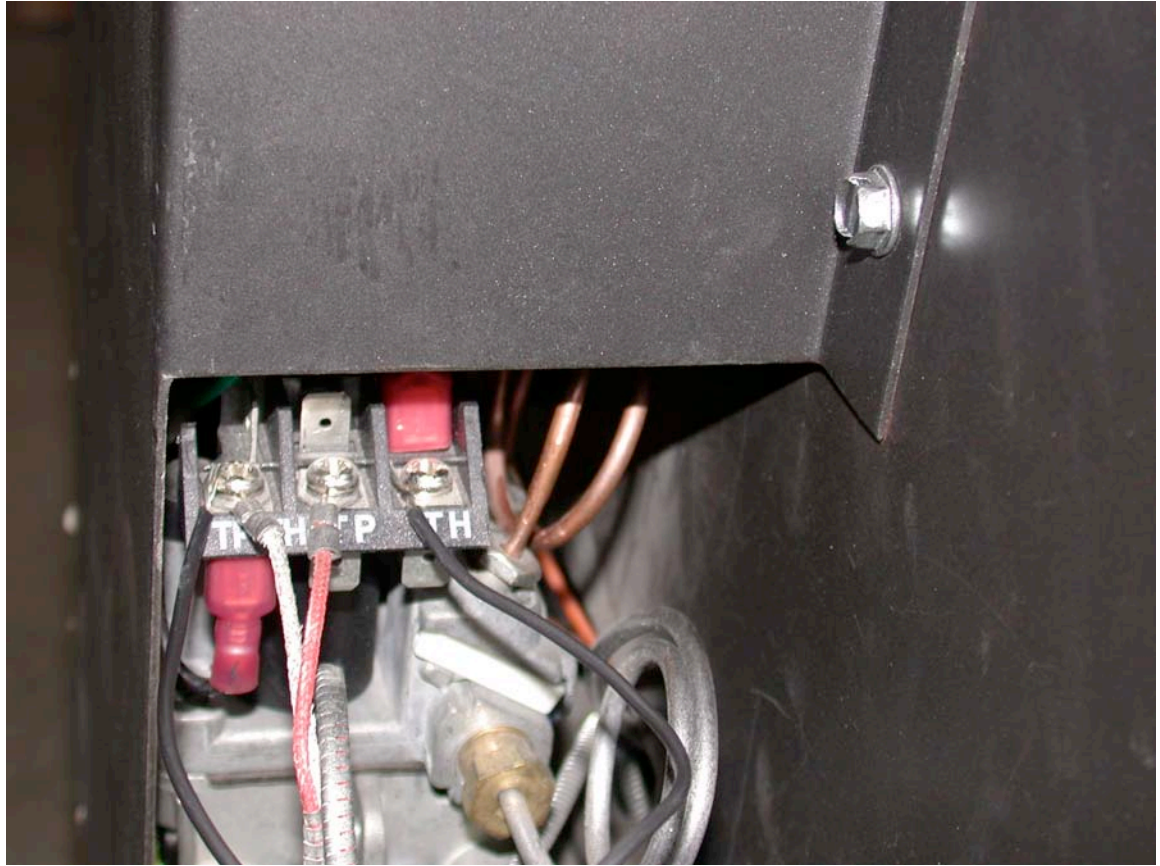


### **Fireside Burner will not light, but pilot is on.**

1. Make sure all control knobs and switches are ON. Make sure the round control knob at the top of the stove is pulled up as it can get stuck.

2. Jumper wire test: (Test for an electrical problem, including thermostats and the ON/OFF toggle switch)

Make sure the pilot is lit and the control knob is in the “ON” position and pulled up completely. Place a conductive element like a piece of wire, paper clip, etc. on the terminal labeled “TPTH” (far left, away from the stove) on the control valve wiring block and then touch the other end of the conductive element to the terminal labeled “TH” (far right, closest to the stove). See the following photo. If the burner does not light then go to the next test. If the jumper wire eliminates the problem and the burner turns on then there is an electrical problem.



Once an electrical problem has been indicated by a successful jumper wire test then it could be any of the following problems: a bad ON/OFF switch or switch wire, a faulty thermostat, or improper wiring. Start by disconnecting all thermostats and testing the ON/OFF switch only. If the stove will not turn on with the switch, but will work with the jumper then it needs a new switch. If the switch works, but the thermostat will not then the thermostat may be wired incorrectly, have dead batteries, or be malfunctioning.

Note: It is perfectly safe to keep the jumper wire attached to the controller in the case of a bad ON/OFF switch until a new switch is installed.

### 3. Thermopile test: (Tests that the thermopile is functioning properly)

Option 1. Make sure the pilot is lit and the control knob is in the “Pilot” position and the ON/OFF toggle switch “ON”. Place a mV tester on the wiring block terminals labeled “TPTH” (far left, farthest from the stove) and “TP” (middle). With the pilot lit you should get a minimum voltage of 325 mV. If it is lower then you must replace the thermopile. See the replacement instructions.

Option 2. Make sure the pilot is lit and the control knob is in the “ON” position and the ON/OFF toggle switch “ON”.

Place a wire to the positive terminal of any fresh battery (AA, C, D, or 9V) to the terminal labeled “TPTH” (far left, farthest from the stove) and another wire from the negative battery terminal to the “TP” (middle) terminal on the control valve wiring block. See the following photos. This should satisfy the valve safety mechanism allowing gas into the burner, and it should light. If the stove lights then the thermopile needs to be replaced.

